

Schreiner No. II.

1. Fach 2³ Lage

No. 1. Ouverture

Co. V. Oboi, Viola e
Basso

H. St.
de Sig. Ardespin



A

Sonata. Wol. Violino 1. mo

Allegro $\frac{3}{4}$

adagio Allegro

forte piano

forte piano

forte piano

Volti

Op. 23

Mus. 1850-N-1



2 3

Garotte

Haarbois solo tacet || Garotte da Capo

Adagio

1. Rigadon

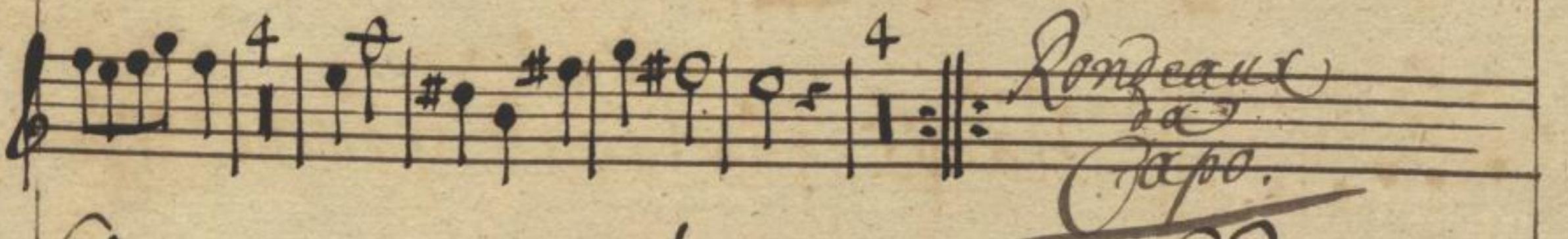
2. Rigadon

1. Rigadon da Capo

Rondeau 



Menuet 



Gigue 





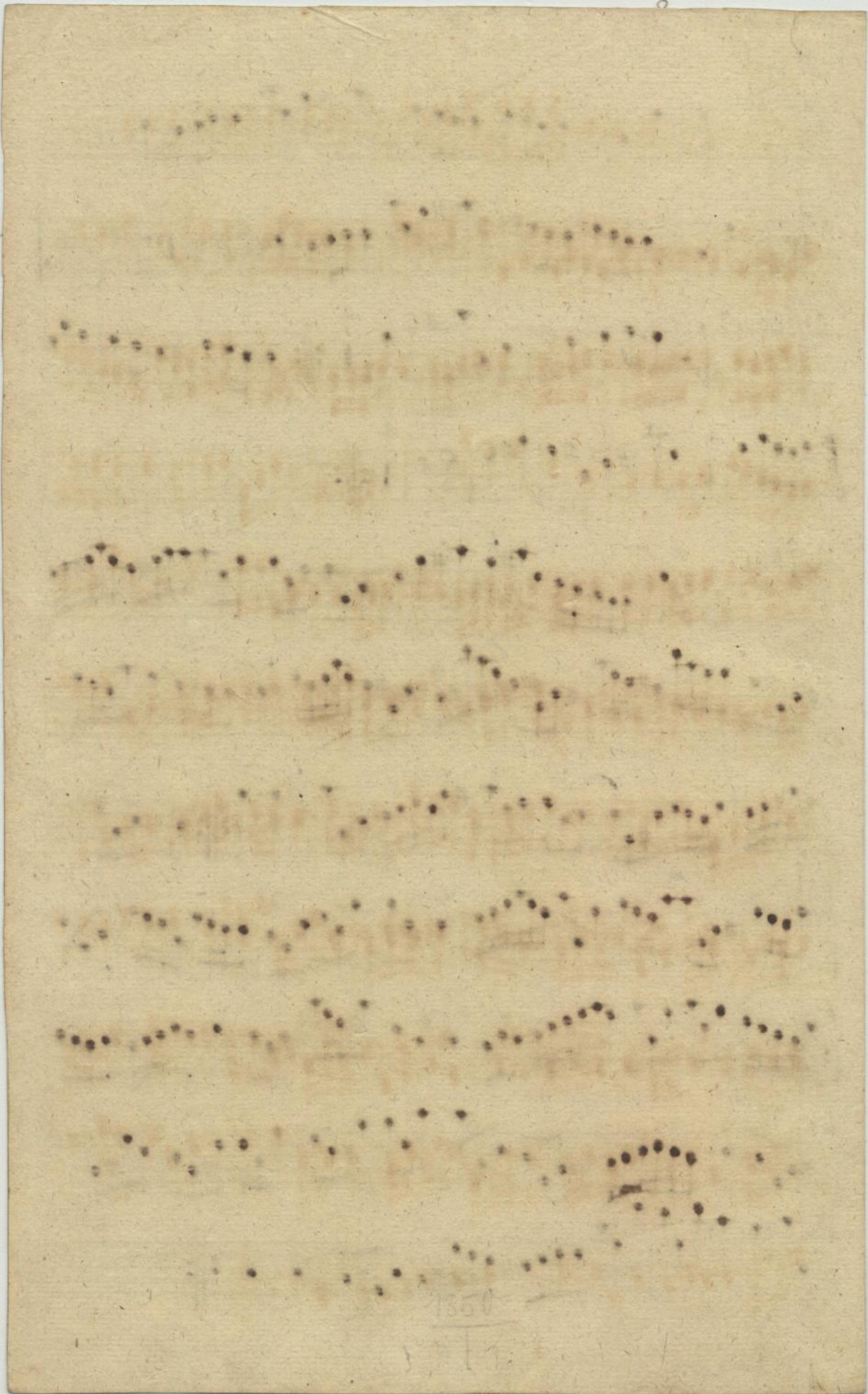








3 5



Conata

Violino 1^{mo}

Allegro

Handwritten musical score for Violino 1^{mo}, Op. 23, No. 1. The score consists of ten staves of music. It begins with the tempo marking 'Allegro' and a 3/4 time signature. The key signature has one sharp (F#). The score includes dynamic markings 'piano' and 'forte', and tempo changes to 'adagio' and back to 'allegro'. The piece concludes with a double bar line.

Op. 23
Mus. 1850-N-1



X 6

Gavotte

Handwritten musical notation for the Gavotte section, consisting of three staves of music in treble clef with a key signature of one sharp (F#). The notation includes various note values, rests, and dynamic markings.

forte *Hautbois solo tacet* *Gavotte da Capo*

Adagio

Handwritten musical notation for the Adagio section, consisting of one staff of music in treble clef with a 3/4 time signature.

Handwritten musical notation for the first staff of the Rigadon section, starting with a measure rest of 9 measures.

Handwritten musical notation for the second staff of the Rigadon section.

1. Rigadon

Handwritten musical notation for the first staff of the Rigadon section.

Handwritten musical notation for the second staff of the Rigadon section.

2. Rigadon

Handwritten musical notation for the first staff of the Rigadon section.

1. Rigadon
Da Capo

Handwritten musical notation for the first staff of the Rigadon section, ending with a double bar line.

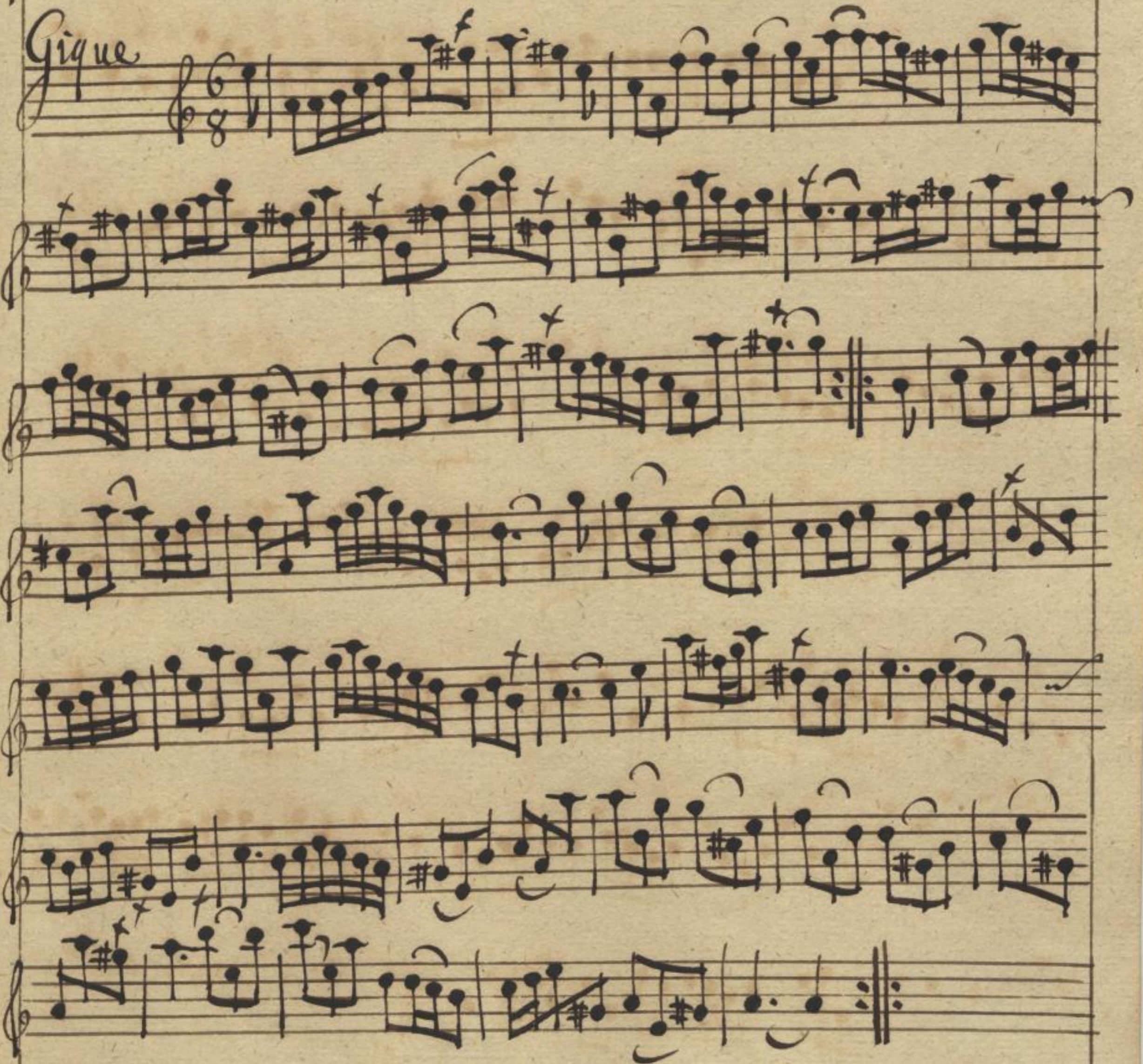
Rondeau

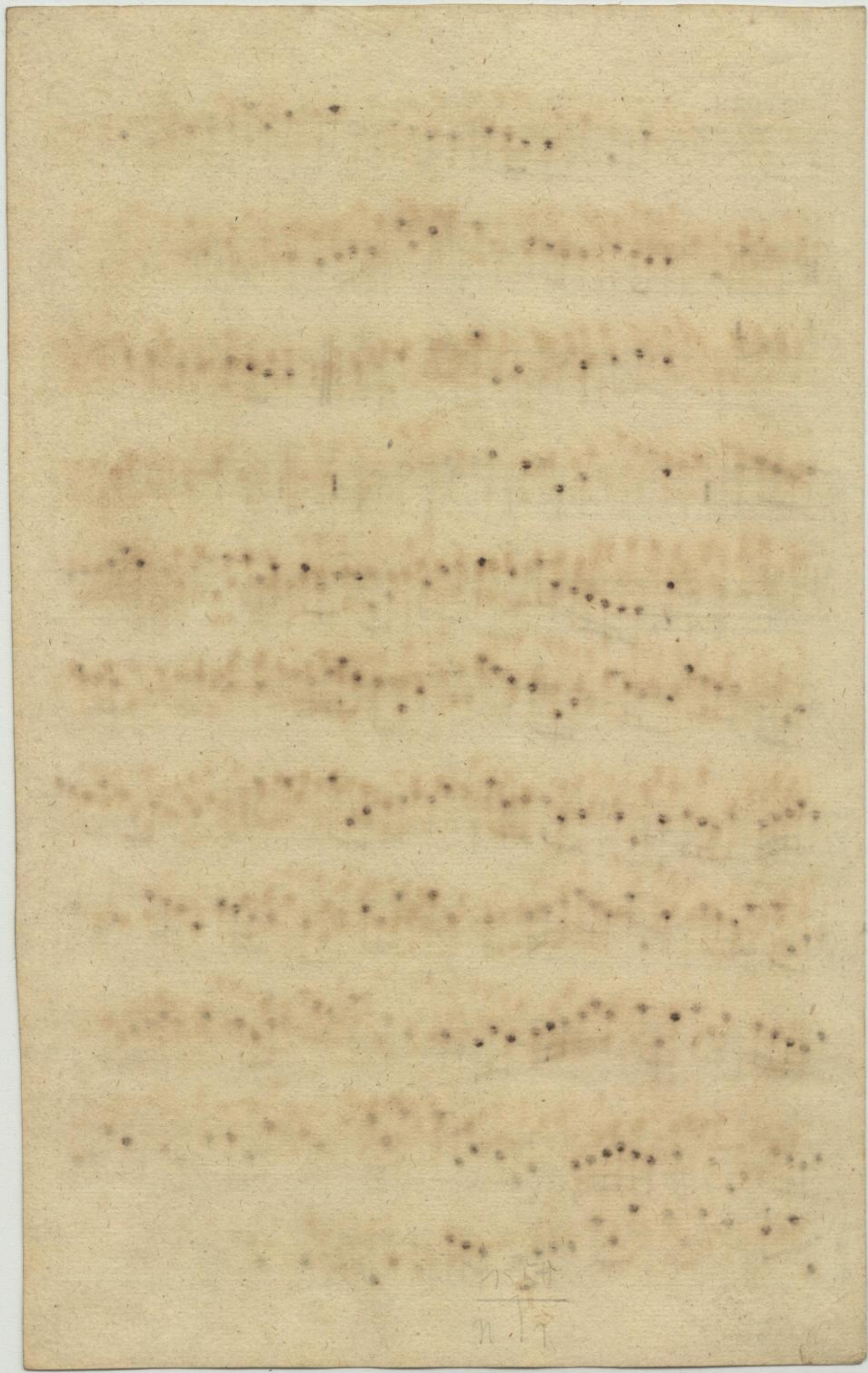


Menuet



Gigue





Conata

Violino 1. mo

Allegro



adagio

allegro



piano

forte



piano

forte



piano

forte



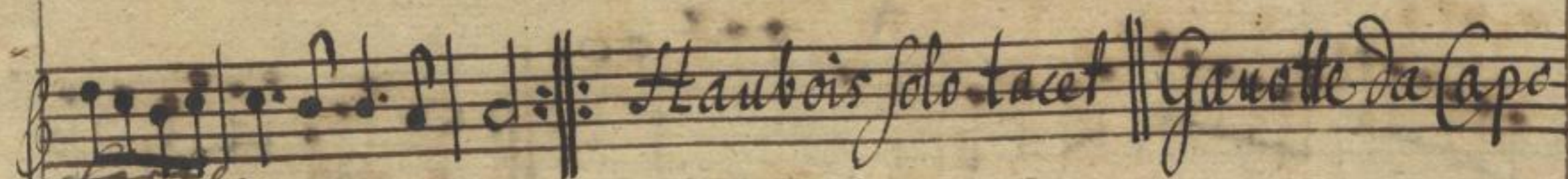
Cl. 23

Mus. 1850-N-1



6 9

Gavotte



Rondeau

Menuet

Rondeau da capo

Gigue

[Faint, illegible handwritten text, likely bleed-through from the reverse side of the page.]

1857
11/11

Conata

Violino 1. mo

Allegro 3/4

Handwritten musical notation for Violino 1. mo, including dynamic markings like *adagio*, *allegro*, *piano*, and *forte*.

4/6 #23

Mus. 1850-N-1

12



Gavotte

piano

forte
Adagio

Flauto solo tacet // Gavotte da Capo

1. Rigadon

2. Rigadon

1. Rigadon
da Capo

Rondeau

Handwritten musical notation for the first system of the 'Rondeau' piece, featuring a treble clef, a 3/4 time signature, and a key signature of one sharp (F#).

Handwritten musical notation for the second system of the 'Rondeau' piece, ending with the instruction 'da Capo'.

Menuet

Handwritten musical notation for the first system of the 'Menuet' piece, featuring a treble clef and a 3/4 time signature.

Handwritten musical notation for the second system of the 'Menuet' piece, including a repeat sign and the instruction 'Rondeau da Capo'.

Gigue

Handwritten musical notation for the first system of the 'Gigue' piece, featuring a treble clef and a 6/8 time signature.

Handwritten musical notation for the second system of the 'Gigue' piece.

Handwritten musical notation for the third system of the 'Gigue' piece.

Handwritten musical notation for the fourth system of the 'Gigue' piece.

Handwritten musical notation for the fifth system of the 'Gigue' piece.

Handwritten musical notation for the sixth system of the 'Gigue' piece.

Handwritten musical notation for the seventh system of the 'Gigue' piece.

[The page contains extremely faint, illegible handwritten text, likely bleed-through from the reverse side of the paper.]

Conata

Haute Contre

Allegro

adagio *allegro*

piano *forte*

piano *forte*

piano

forte

C. # 25

Mus. 1850-N-1

72



Gavotte

Handwritten musical notation for the Gavotte section, consisting of four staves of music in G major and 3/4 time. The notation includes various note values, rests, and accidentals.

piano
Hautbois solo tacet
Gavotte da Capo

Adagio

forte

Handwritten musical notation for the Adagio section, consisting of three staves of music in G major and 3/4 time. The notation includes various note values, rests, and accidentals.

1. Rigadon

2. Rigadon

Handwritten musical notation for the Rigadon section, consisting of three staves of music in G major and 3/4 time. The notation includes various note values, rests, and accidentals.

1. Rigadon da Capo

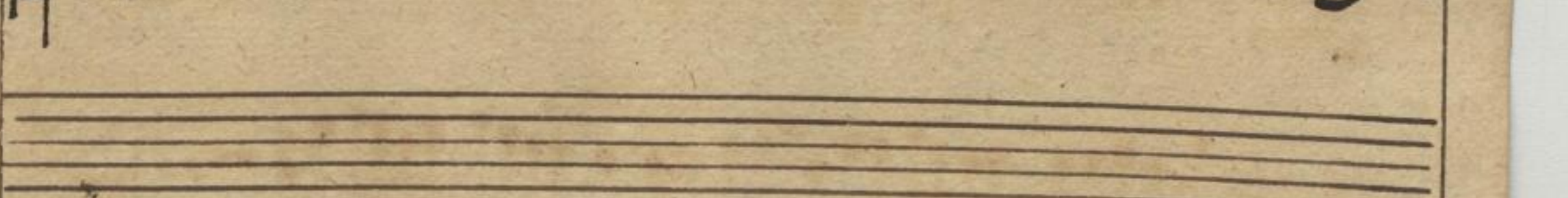
Rondeau . 5:



Menuet



Gigue



73

Handwritten musical notation on aged paper, featuring several staves of notes and rests. The notation is a form of early musical shorthand, possibly a type of tablature or shorthand notation, consisting of dots and lines arranged in a structured manner across the staves. The paper shows signs of age, including discoloration and some stains.

Sonata

Taille

Allegro

adagio *allegro*

piano *forte*

piano *forte*

piano *forte*

piano *forte*

piano *forte*

piano *forte*

Gavotte

piano *forte*

Hautbois solotant Gavotte da capo

C. F. B.

Mus. 1850-N-1



74 31

Adagio



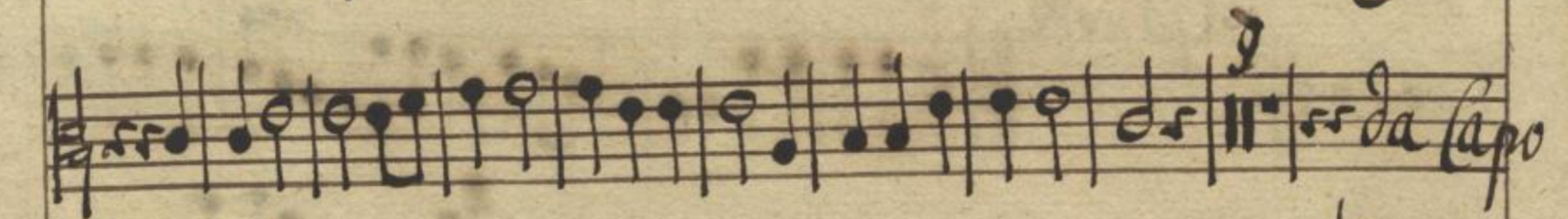
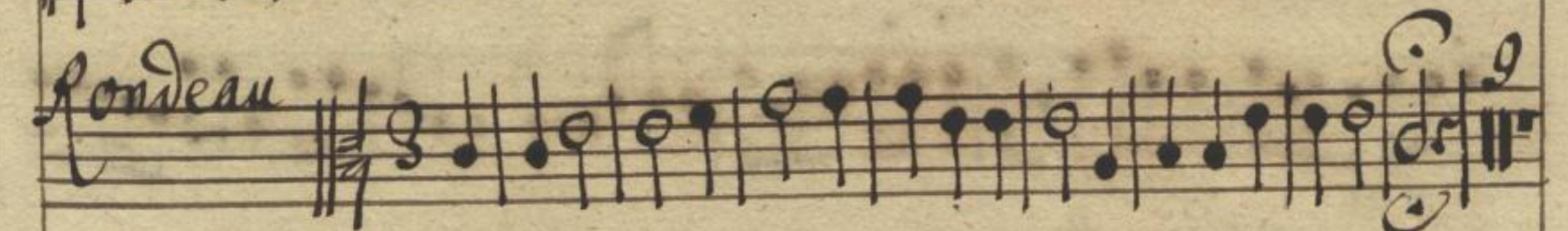
1. Rigadon



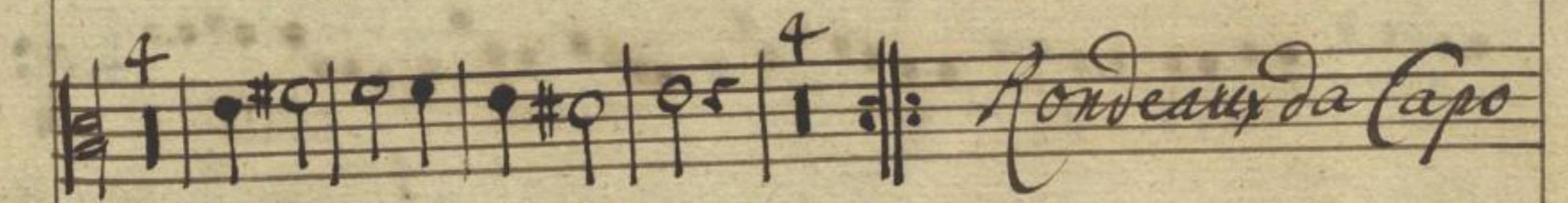
2. Rigadon



1. Rigadon da Capo



Menuet



Rondeau da Capo

Gigue

A handwritten musical score for a piece titled "Gigue". The score is written on six staves. The first staff begins with a treble clef, a key signature of one sharp (F#), and a 6/8 time signature. The music is composed of eighth and sixteenth notes, with some rests and accidentals. The notation is clear and legible, typical of 17th or 18th-century manuscript notation. The piece concludes with a double bar line and a fermata on the final note of the sixth staff.

75

Handwritten musical notation on aged paper, consisting of six staves of notes. The notes are small, dark dots arranged in horizontal lines, with some vertical stems. The paper is heavily stained and discolored.

1830
H. 9

Conata

Basse de Violon

Allegro

3/4

Handwritten musical notation for the first system of the 'Conata' section, featuring a treble clef and a 3/4 time signature.

Handwritten musical notation for the second system of the 'Conata' section.

adagio

Handwritten musical notation for the third system of the 'Conata' section, marked 'adagio'.

Allegro

Handwritten musical notation for the fourth system of the 'Conata' section, marked 'Allegro'.

piano forte

piano forte

Handwritten musical notation for the fifth system of the 'Conata' section, with dynamic markings 'piano forte'.

Handwritten musical notation for the sixth system of the 'Conata' section, with dynamic markings 'piano forte'.

piano forte

Gavotte

C

Handwritten musical notation for the first system of the 'Gavotte' section, marked 'C'.

Handwritten musical notation for the second system of the 'Gavotte' section, with dynamic markings 'piano forte'.

piano

forte

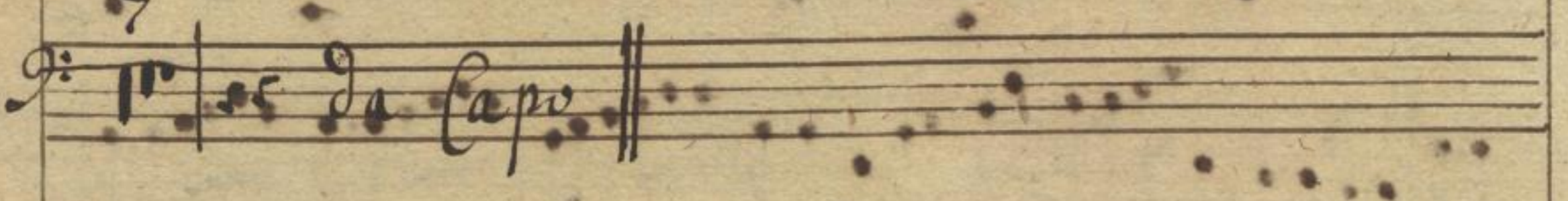
Haut: solo
tacet
Gavotte da capo

Mus. 1850-N-1



16 15

Adagio



Menuet

4

4

Rondeau da Capo

Gigue

Sonata

Basse de Violon

Allegro 3/4

1.

5

adagio 3/4 *allegro* 3/4

piano forte

piano forte

piano forte

piano forte

piano forte

Volti

C. 23
Mus. 1850-N-1

SLUB
Dresden

18

Gavotte

Handwritten musical notation for the Gavotte section, consisting of three staves of music in bass clef with a 3/4 time signature.

Handwritten musical notation for the Gavotte section, including a double bar line and the instruction *forte*.

Haut: solo facet
Gavotte da Capo

Handwritten musical notation for the Adagio section, starting with the tempo marking *Adagio* and a 3/8 time signature.

Handwritten musical notation for the Adagio section, continuing the melody.

Handwritten musical notation for the Adagio section, including a key signature change to one sharp (F#) and a double bar line.

Handwritten musical notation for the first Rigadon section, starting with the tempo marking *1. Rigadon* and a 3/4 time signature.

Handwritten musical notation for the first Rigadon section, continuing the melody.

Handwritten musical notation for the second Rigadon section, starting with the tempo marking *2. Rigadon* and a 3/4 time signature.

Handwritten musical notation for the first Rigadon da Capo section, starting with the tempo marking *1. Rigadon da Capo*.

Rondeau

Handwritten musical notation for the first system of 'Rondeau'. It consists of two staves. The top staff is in treble clef with a 3/8 time signature. The bottom staff is in bass clef with a 3/8 time signature. The music features a series of eighth and sixteenth notes. A '9' is written above the first measure of the bottom staff, and a '7' is written above the first measure of the top staff. The system ends with a double bar line.

Muet

Handwritten musical notation for the second system of 'Muet'. It consists of two staves. The top staff is in treble clef with a 3/8 time signature. The bottom staff is in bass clef with a 3/8 time signature. The music features a series of eighth and sixteenth notes. A '4' is written above the first measure of the top staff. The system ends with a double bar line.

Gigue

Handwritten musical notation for the third system of 'Gigue'. It consists of two staves. The top staff is in treble clef with a 6/8 time signature. The bottom staff is in bass clef with a 6/8 time signature. The music features a series of eighth and sixteenth notes. A '4' is written above the first measure of the top staff. The system ends with a double bar line.

[Faint, illegible handwriting on aged paper]

1550
1717

Sonata

Cembalo.

Allegro 3/8

Handwritten musical score for the first part of a Sonata. The score is written on ten staves, alternating between treble and bass clefs. It includes various musical notations such as notes, rests, and ornaments. The tempo is marked 'Allegro 3/8'. The key signature is one sharp (F#). The score includes dynamic markings like 'piano' and 'Adagio'. There are also some numerical annotations above the notes, possibly indicating fingerings or specific rhythmic values.

Gavotte

Handwritten musical score for a Gavotte. The score is written on four staves, alternating between treble and bass clefs. It includes various musical notations such as notes, rests, and ornaments. The tempo is marked 'Gavotte'. The key signature is one sharp (F#). The score includes dynamic markings like 'piano' and 'forte'. There are also some numerical annotations above the notes, possibly indicating fingerings or specific rhythmic values.

piano forte
Volti subito

Mus. 1850-N-1



22
21

Haub. solo

A Japis

1. Rigadon

2. Rigadon

Rondeau

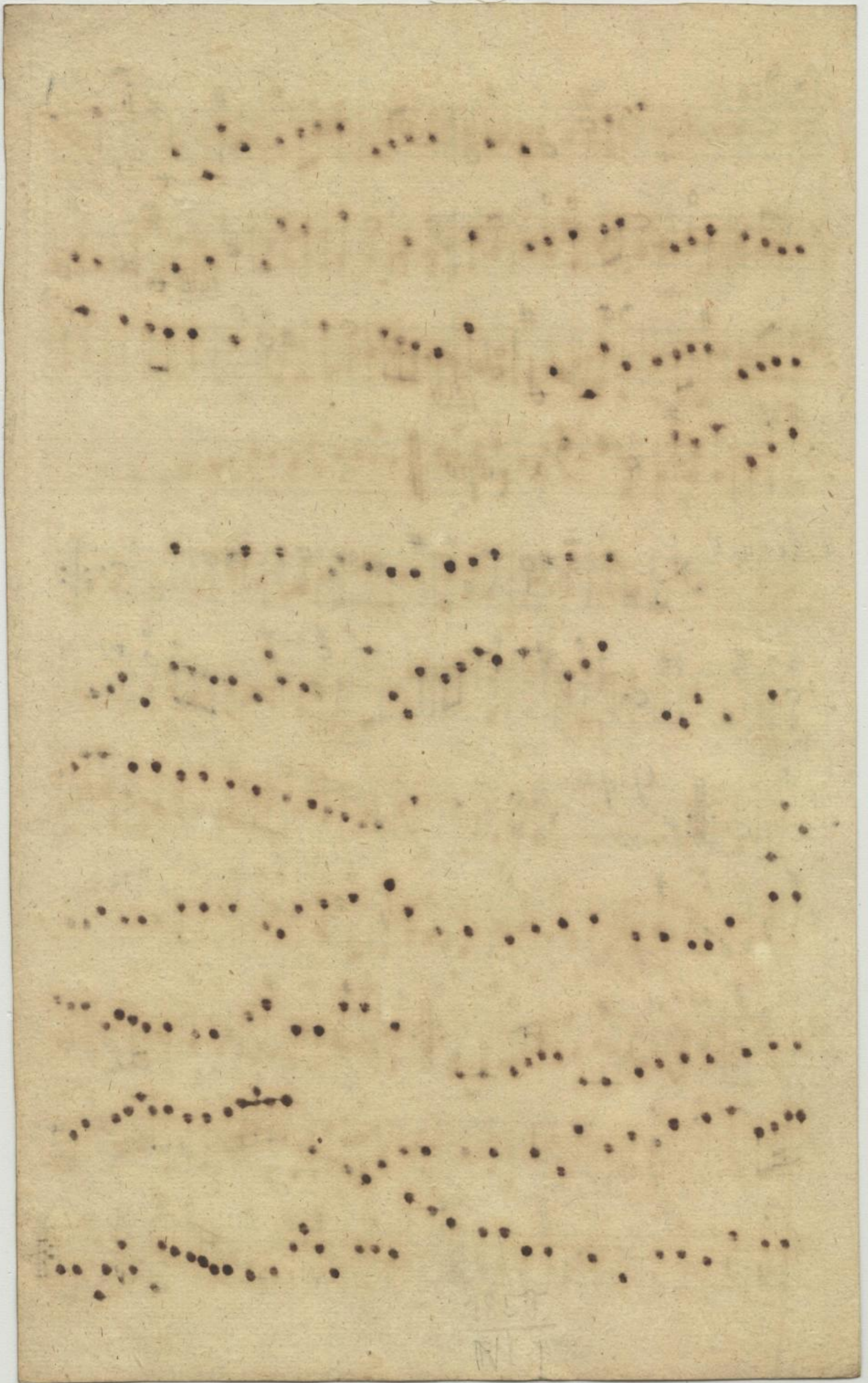
Handwritten musical score for 'Rondeau'. It consists of three staves of music in bass clef with a 3/4 time signature. The notation includes various notes, rests, and accidentals. Chord symbols such as #, 6, 7#, #b, and # are written above the notes. Performance markings include 'solo' and 'tutti'. The piece concludes with the instruction 'da Capo' followed by a double bar line.

Menuet

Handwritten musical score for 'Menuet'. It consists of two staves of music in bass clef with a 3/4 time signature. The notation includes notes, rests, and accidentals. Chord symbols such as #, 6, #, and 2 6 are present. Performance markings include 'solo' and 'tutti'.

Gigue.

Handwritten musical score for 'Gigue'. It consists of four staves of music in bass clef with a 6/8 time signature. The notation is more complex, featuring many sixteenth notes and rests. Chord symbols such as #, 6, b#, #, 6s, and 43676 are used. Performance markings include 'solo' and 'tutti'. The piece concludes with a double bar line.



Sonata

Haubois.

Allegro

Handwritten musical score for Clarinet in B-flat, consisting of ten staves of music. The score includes dynamic markings such as *piano* and *forte*, and tempo markings *adagio* and *allegro*. The music is written in a single system with a treble clef and a key signature of one sharp (F#).

C. 23
Mus. 1850-N-1



70

Gavotte

piano forte

Gavotte

solo

1. Gavotte Da Capo

Adagio

tutti

1. Rigadon

2. Rigadon

1. Rigadon da Capo

Rondeau

Solo

tutti

Solo

Da Capo

Menuet

Solo

tutti

Solo

Rondeau da Capo

tutti

Solo

Volti

26

Gigue

Handwritten musical score for a Gigue, consisting of eight staves of music. The notation is in treble clef with a key signature of one sharp (F#) and a 3/8 time signature. The music features various note values, rests, and ornaments, typical of Baroque or Classical era dance music. The first staff begins with a treble clef, a 3/8 time signature, and a key signature of one sharp. The piece concludes with a double bar line and repeat dots.

Conata

Basfon

Allegro 3/8

1.

Adagio

6 # 23
Mus. 1850-N-1

SLUB
Dresden

20
34

piano forte
Volti subito

Haub. solo



*Gavotte
da capo*

Adagio



solo

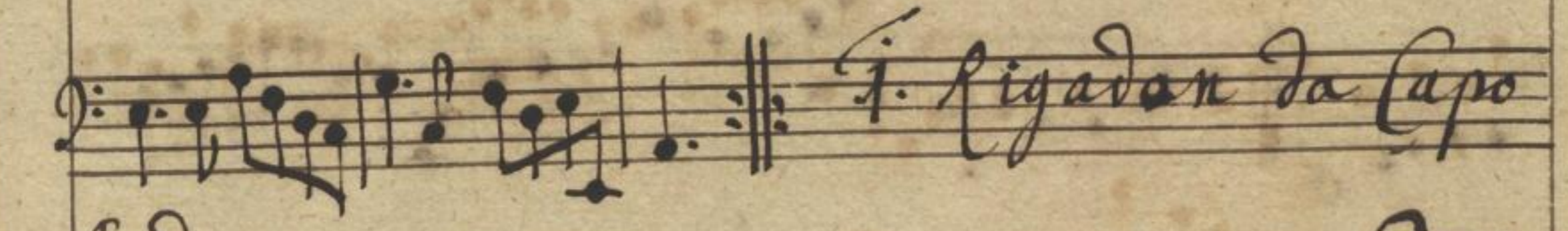


tutti



solo

tutti



1. Rigadon da Capo



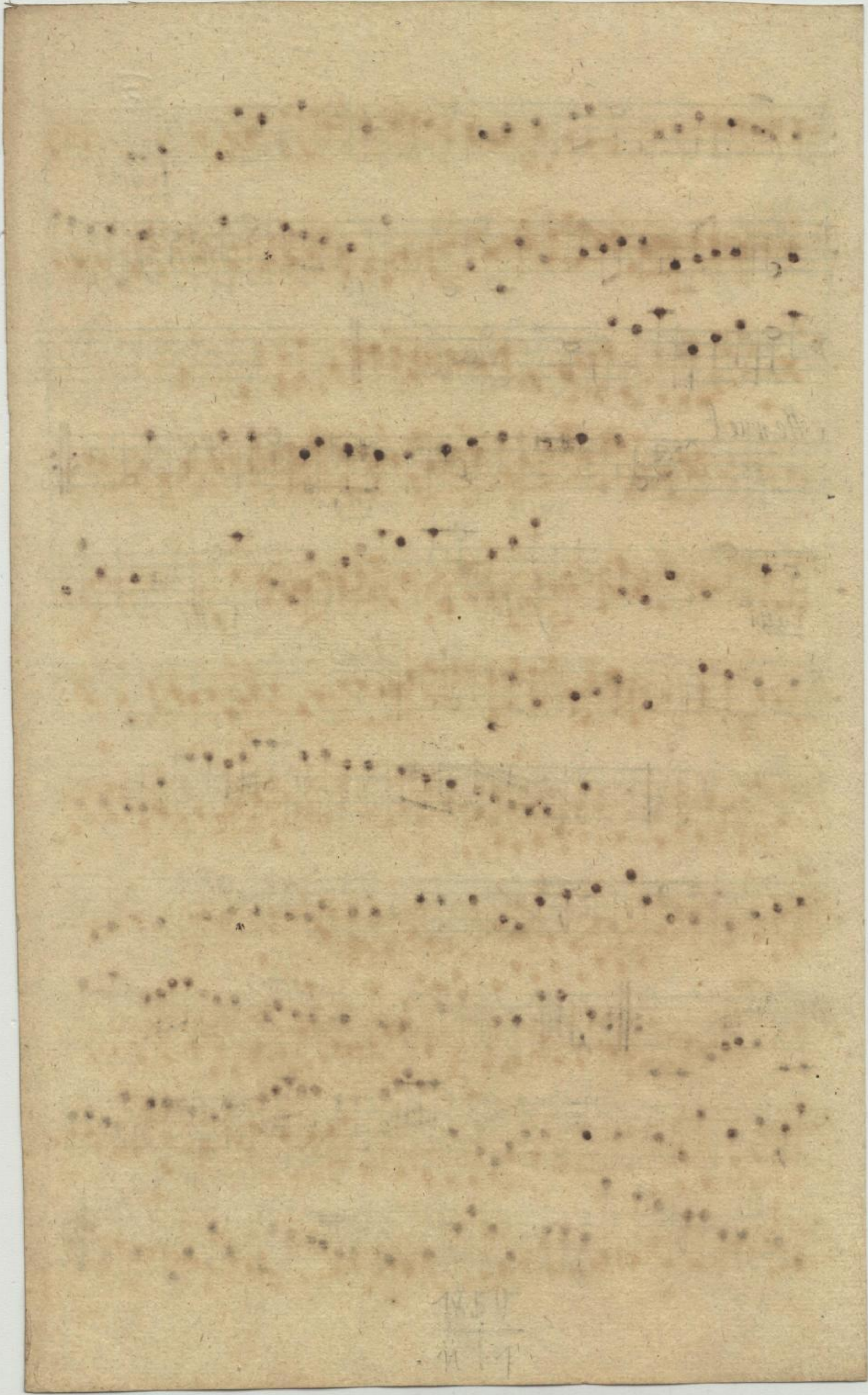
Londeau

solo

Handwritten musical notation on three staves. The first staff has a treble clef and a key signature of one sharp (F#). The second staff has a bass clef. The third staff has a bass clef and contains the instruction "da Capo" with a double bar line. Performance markings include "tutti" above the first staff and "Solo" above the second staff.

Section titled "Menuet" in 9/3 time. It consists of two staves. The first staff has a treble clef and a key signature of one sharp. The second staff has a bass clef. Performance markings include "Solo" above the first staff, "tutti" below the first staff, "Solo" below the second staff, and "tutti" below the second staff. The section ends with a double bar line and the instruction "Rondeau da Capo".

Section titled "Gigue" in 6/7 time. It consists of three staves. The first staff has a treble clef and a key signature of one sharp. The second and third staves have bass clefs. The notation is highly rhythmic and includes many slurs and ties.



Handwritten musical score on the left page, featuring ten staves of music. The notation includes various note values, rests, and clefs. There are several annotations in German, including "Hautbois solo" and "Gaucho da capo". The paper shows signs of age and wear.

Handwritten musical score on the right page, featuring ten staves of music. The notation includes various note values, rests, and clefs. There are several annotations in French, including "Rondeau", "Menuet", and "Gigue". The paper shows signs of age and wear.





Basse de Violon

stato

Quolette

Handwritten musical notation for the first section, consisting of six staves. The notation includes various rhythmic values, accidentals, and dynamic markings such as *forte* and *rit.* There are also some handwritten annotations in German, including "Nicht für Bass" and "in G-dur".

1. Rigadon

Handwritten musical notation for the first Rigadon, consisting of two staves.

2. Rigadon

Handwritten musical notation for the second Rigadon, consisting of two staves.

1. Rigadon da capo

Handwritten musical notation for the first Rigadon da capo, consisting of two staves.

Rondeau

Handwritten musical notation for the first part of the Rondeau, consisting of two staves.

1. da capo

Handwritten musical notation for the first da capo section, consisting of two staves.

Mouet

Handwritten musical notation for the Mouet section, consisting of two staves.

Handwritten musical notation for a section with a 4-measure repeat sign, consisting of two staves.

Gigue

Handwritten musical notation for the Gigue section, consisting of two staves.

Handwritten musical notation for a section, consisting of two staves.

Handwritten musical notation for a section, consisting of two staves.

Handwritten musical notation for a section, consisting of two staves.

Handwritten musical notation for a section, consisting of two staves.

Handwritten musical notation for a section, consisting of two staves.